



Test Report

No. SHAHG1003678401

Date: 20 Apr 2010

Page 1 of 9

NINGBO SYNKEMI IMP.&EXP.CO.,LTD

RM 5-4 DONGHANG BLDG, NO.796 EAST ZHONGSHAN ROAD,JIANGDONG DISTRICT,NINGBO,CHINA

The following sample(s) was/were submitted and identified on behalf of the clients as : DISPENSER PUMP

SGS Job No. : SHD201007903 - SH
Item No. : SEE ATTACHMENT
Supplier : NINGBO SYNKEMI IMP.&EXP.CO.,LTD
Buyer :
Manufacturer : NINGBO SYNKEMI IMP.&EXP.CO.,LTD
Country of Origin : CHINA
Country of Destination :
Date of Sample Received : 02 Apr 2010
Testing Period : 02 Apr 2010 - 20 Apr 2010
Test Requested : Selected test(s) as requested by client.
Test Method : Please refer to next page(s).
Test Results : Please refer to next page(s).
Conclusion : When tested as specified, the submitted samples 003~004 comply with the overall migration requirements stated in European Commission Directive 2002/72/EC and its amendments relating to plastics materials and articles intended to come into contact with foodstuff.

The submitted sample 001 does not exceed the limit stated in European Council Directive 84/500/EEC and its amendment Commission Directive 2005/31/EC.

When tested as specified, the submitted sample 002 was found to be within the extractable heavy metal limit for metal according to LFGB section 30.
Hence, the submitted sample complies with the safety aspect for metal in EU Regulation No. 1935/2004 (Article 3)

This document is issued by the Company subject to its General Conditions of Service printed overleaf, available on request or accessible at http://www.sgs.com/terms_and_conditions.htm and for electronic format documents, subject to Terms and Conditions for Electronic Documents at www.sgs.com/terms_e-document.htm. Attention is drawn to the limitation of liability, jurisdiction and jurisdiction issues defined therein. Any holder of this document is advised that information contained hereon reflects the Company's findings at the time of its inspection only and within the limits of Client's instructions, if any. The Company's sole responsibility is to its Client and this document does not exonerate parties to a transaction from exercising all their rights and obligations under the transaction documents. This document cannot be reproduced except in full, without prior written approval of the Company. Any unauthorized alteration, forgery or falsification of the content or appearance of this document is unlawful and offenders may be prosecuted to the fullest extent of the law. The loss of or damage to related test results shown in this test report refer only to the sample(s) tested.



3rd Building, No.889 Yishan Road Xuhui District, Shanghai China 200233
中国·上海·徐汇区宜山路889号3号楼 邮编: 200233

TEL: (86-21) 61402553 FAX: (86-21) 64953679 www.cn.sgs.com
HL: (86-21) 61402594 HL: (86-21) 54500353 e sgs.china@sgs.com

SHCHEM 3322363

0000077795

Member of the SGS Group (SGS SA)



Test Report

No. SHAHG1003678401

Date: 20 Apr 2010

Page 2 of 9

Signed for and on behalf of
SGS-CSTC Ltd.

Sandy Hao

Hao Jinyu, Sandy
Lab Manager

Attention: To check the authenticity of testing /inspection report & certificate, pls. contact tel: (86-755)83071443 or email: CN.Doccheck@sgs.com

This document is issued by the Company subject to its General Conditions of Service printed overleaf, available on request or accessible at http://www.sgs.com/terms_and_conditions.htm and for electronic format documents, subject to Terms and Conditions for Electronic Documents at www.sgs.com/terms_e-document.htm. Attention is drawn to the limitation of liability, indemnification and jurisdiction issues defined therein. Any holder of this document is advised that information contained hereon reflects the Company's findings at the time of its inspection only and within the limits of Client's instructions, if any. The Company's sole responsibility is to its Client and this document does not exonerate parties to a transaction from exercising all their rights and obligations under the transaction documents. This document cannot be reproduced except in full, without prior written approval of the Company. Any unauthorized alteration, forgery or falsification of the content or appearance of this document is unlawful and offenders may be prosecuted to the fullest extent of the law. Unless otherwise stated, the results shown in this test report refer only to the sample(s) tested.



SHCHEM 3322362

SGS-CSTC Standards Technical Service (Shanghai) Co., Ltd.
Testing Center Laboratory

3rd Building, No. 889 Yishan Road Xuhui District, Shanghai China 200233
中国·上海·徐汇区宜山路889号3号楼 邮编: 200233

t E&E (86-21) 61402553 f E&E (86-21) 64953679 www.cn.sgs.com
HL: (86-21) 61402594 HL: (86-21) 54500353 e sgs.china@sgs.com

0000077795

Member of the SGS Group (SGS SA)

Test Results :

Test Part Description :

Specimen No.	SGS Sample ID	Description
1	SHA10-036784.001	Transparent glass ball
2	SHA10-036784.002	Silvery metal spring
3	SHA10-036784.003	White plastic head
4	SHA10-036784.004	Transparent plastic tube

Overall migration

Test Requested : To determine the Overall Migration for compliance with European Commission Directive 2002/72/EC and its amendments relating to plastic materials and articles intended to come into contact with foodstuffs.

Test Method : With reference to EN1186-1:2002 for selection of conditions and test method;
EN1186-3:2002 aqueous food simulants by total immersion method;
EN1186-2:2002 olive oil by total immersion method;

<u>Simulant Used</u>	<u>Time</u>	<u>Temperature</u>	<u>Max. Permissible Limit</u>	<u>Result of 003 Overall Migration</u>
Deionized Water	240.0hr	20°C	10.0mg/dm ²	<3.0mg/dm ²
3% Acetic Acid	240.0hr	20°C	10.0mg/dm ²	<3.0mg/dm ²
10% Ethanol	240.0hr	20°C	10.0mg/dm ²	<3.0mg/dm ²
Rectified Oliver Oil	240.0hr	20°C	10.0mg/dm ²	<3.0mg/dm ²

<u>Simulant Used</u>	<u>Time</u>	<u>Temperature</u>	<u>Max. Permissible Limit</u>	<u>Result of 004 Overall Migration</u>
Deionized Water	240.0hr	20°C	10.0mg/dm ²	<3.0mg/dm ²
3% Acetic Acid	240.0hr	20°C	10.0mg/dm ²	<3.0mg/dm ²
10% Ethanol	240.0hr	20°C	10.0mg/dm ²	<3.0mg/dm ²
Rectified Oliver Oil	240.0hr	20°C	10.0mg/dm ²	<3.0mg/dm ²

Notes :

1. mg/dm²=milligram per square decimeter
2. °C=degree Celsius
3. <= less than
4. Analytical tolerance of aqueous simulants is 1 mg/dm²

This document is issued by the Company subject to its General Conditions of Service printed overleaf, available on request or accessible at http://www.sgs.com/terms_and_conditions.htm and for electronic format documents, subject to Terms and Conditions for Electronic Documents at www.sgs.com/terms_e-document.htm. Attention is drawn to the limitation of liability, responsibility and jurisdiction issues defined therein. Any holder of this document is advised that information contained hereon reflects the Company's findings at the time of its inspection only and within the limits of Client's instructions, if any. The Company's sole responsibility is to its Client and this document does not exonerate parties to a transaction from exercising all their rights and obligations under the transaction documents. This document cannot be reproduced except in full, without prior written approval of the Company. Any unauthorized alteration, forgery or falsification of the content or appearance of this document is unlawful and offenders may be prosecuted to the fullest extent of the law. Unless otherwise stated the results shown in this test report refer only to the sample(s) tested.



European Council Directive 84/500/EEC and its amendment 2005/31/EC on lead and cadmium extracted by acetic acid from glazed ceramic surfaces.

Test Requested : To determine the leachable Lead and Cadmium contents from the submitted samples in accordance with European Council Directive 84/500/EEC (COUNCIL DIRECTIVE of 15 October 1984 on the approximation of the laws of the Member States relating to ceramic articles intended to come into contact with foodstuffs) and its amendment Commission Directive 2005/31/EC

Test Method : As specified in EEC Directive 84/500/EEC and 2005/31/EC, analysis was performed by AAS.

Sample 001 Category 1

	<u>Vol. of 4% Acetic acid used (ml)</u>	<u>Diameter (mm)</u>	<u>Surface Area (dm²)</u>
1	16	5	0.01
2	16	5	0.01
3	16	5	0.01
4	16	5	0.01

	<u>Leachable Lead (mg/dm²)</u>	<u>Leachable Cadmium (mg/dm²)</u>
1	<0.1	<0.01
2	<0.1	<0.01
3	<0.1	<0.01
4	<0.1	<0.01
Limit	0.8	0.07

Notes :

- (1) Category 1: Articles that cannot be filled and articles that can be filled, the internal depth of which does not exceed 25 mm.
- (2) Category 2: Articles, not in categories 1 or 3, which can be filled
- (3) Category 3: Cooking ware; packaging and storage vessels having a capacity of more than three liters

Extractable Heavy Metals

Test Requested : In accordance with (Article 3) in EU Regulation No. 1935/2004.
For material: Metal - Extractable Heavy Metals

Test Method : Sample preparation in 3% acetic acid at 20°C for 24 hours per client's request, followed by analysis using Inductively Coupled Argon Plasma Spectrometer.

This document is issued by the Company subject to its General Conditions of Service printed overleaf, available on request or accessible at http://www.sgs.com/terms_and_conditions.htm and, for electronic format documents, subject to Terms and Conditions for Electronic Documents at www.sgs.com/terms_e-document.htm. Attention is drawn to the limitation of liability, jurisdiction and jurisdiction issues defined therein. Any holder of this document is advised that information contained hereon reflects the Company's findings at the time of its inspection only and within the limits of Client's instructions, if any. The Company's sole responsibility is to its Client and this document does not exonerate parties to a transaction from exercising all their rights and obligations under the transaction documents. This document cannot be reproduced except in full, without prior written approval of the Company. Any unauthorized alteration, forgery or falsification of the content or appearance of this document is unlawful and offenders may be prosecuted to the fullest extent of the law. Unless otherwise stated the results shown in this test report refer only to the sample(s) tested.

SHCHEM 3322360

Test Report

No. SHAHG1003678401

Date: 20 Apr 2010

Page 5 of 9

Test Item(s)	Limit	Unit	MDL	002
Extractable Lead	0.010	mg/dm ²	0.001	ND
Extractable Cadmium	0.005	mg/dm ²	0.001	ND
Extractable Chromium	0.4	mg/dm ²	0.01	ND
Extractable Nickel	0.1	mg/dm ²	0.01	ND
Extractable Copper	0.5	mg/dm ²	0.01	ND
Extractable Antimony	0.1	mg/dm ²	0.1	ND
Extractable Cobalt	0.1	mg/dm ²	0.1	ND

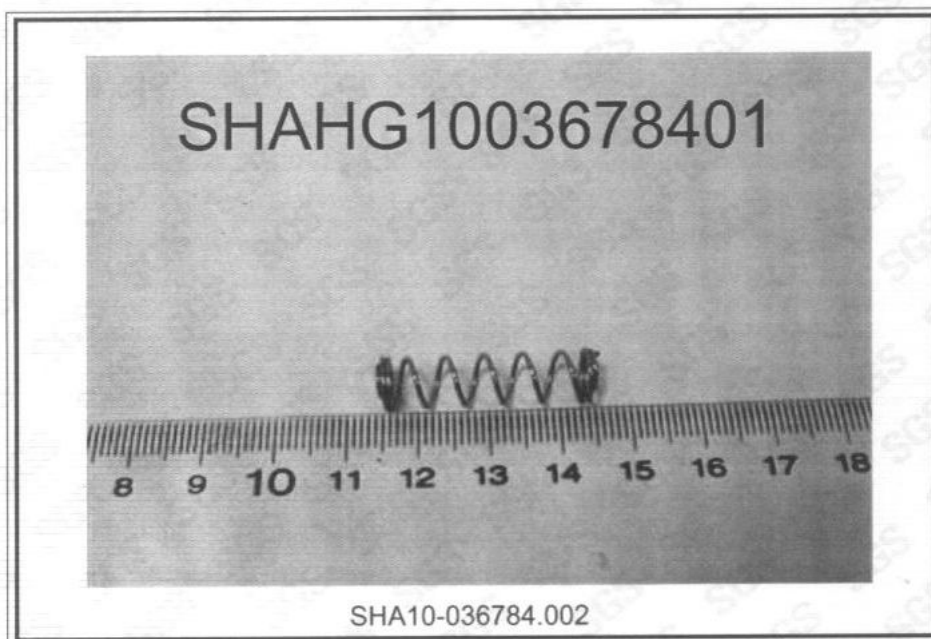
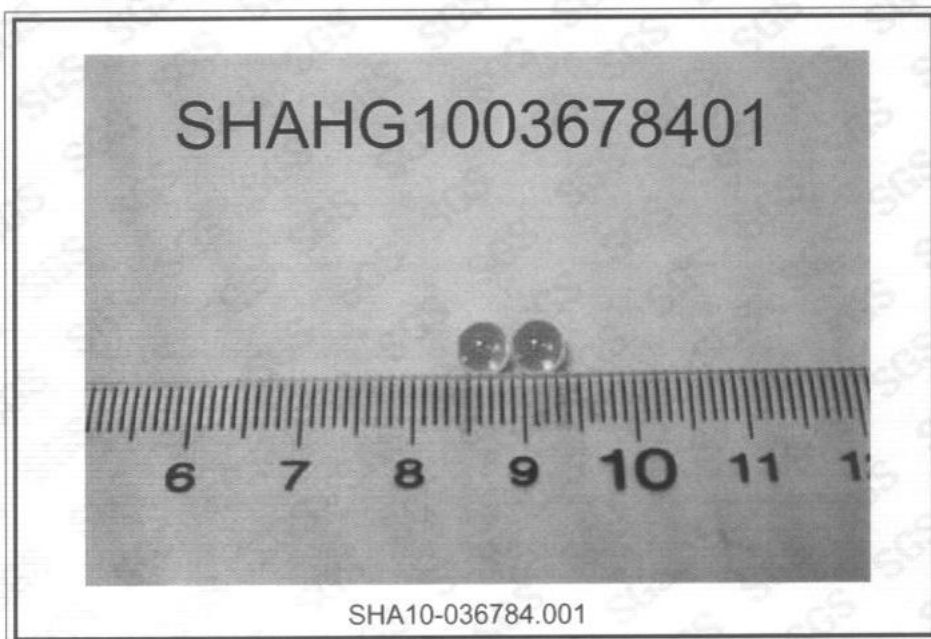
Attention: To check the authenticity of testing / inspection report & certificate, pls. contact tel: (86-755)83071443 email: CN.Doccheck@sgs.com

This document is issued by the Company subject to its General Conditions of Service printed overleaf, available on request or accessible at http://www.sgs.com/terms_and_conditions.htm and for electronic format documents, subject to Terms and Conditions for Electronic Documents at www.sgs.com/terms_e-document.htm. Attention is drawn to the limitation of liability, jurisdiction and jurisdiction issues defined therein. Any holder of this document is advised that information contained hereon reflects the Company's findings at the time of its intervention only and within the limits of Client's instructions, if any. The Company's sole responsibility is to its Client and this document does not exonerate parties to a transaction from exercising all their rights and obligations under the transaction documents. This document cannot be reproduced except in full, without prior written approval of the Company. Any unauthorized alteration, forgery or falsification of the content or appearance of this document is unlawful and offenders may be prosecuted to the fullest extent of the law. Unless otherwise stated the results shown in this test report refer only to the sample(s) tested.



SHCHEM 3322359

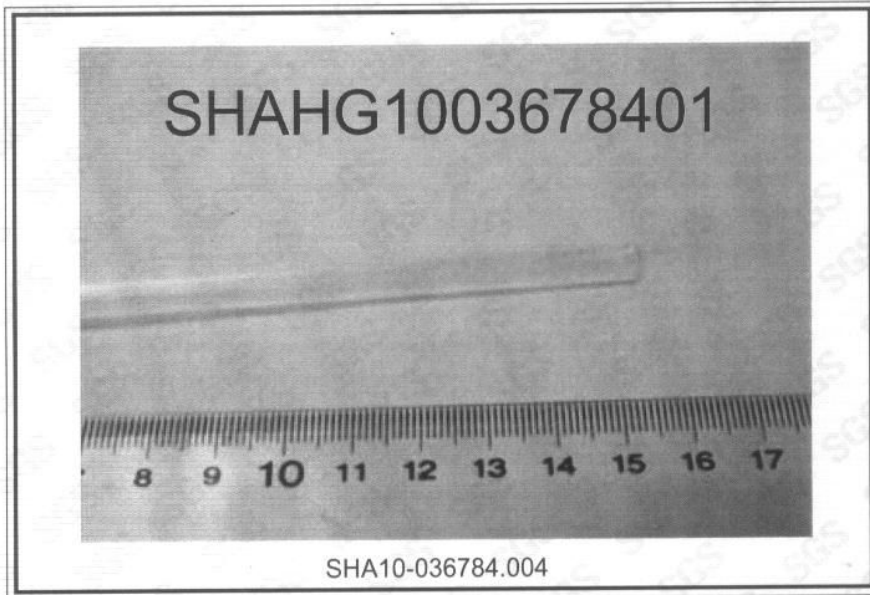
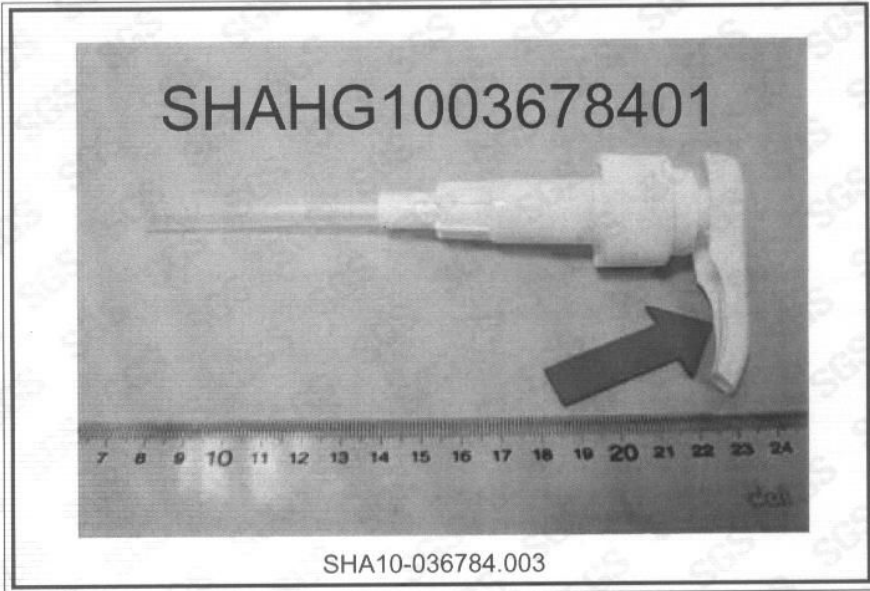
Sample photo:



This document is issued by the Company subject to its General Conditions of Service printed overleaf, available on request or accessible at http://www.sgs.com/terms_and_conditions.htm and for electronic format documents, subject to Terms and Conditions for Electronic Documents at www.sgs.com/terms_e-document.htm. Attention is drawn to the limitation of liability, jurisdiction and jurisdiction issues defined therein. Any holder of this document is advised that information contained hereon reflects the Company's findings at the time of its preparation only and within the limits of Client's instructions, if any. The Company's sole responsibility is to its Client and this document does not exonerate parties to a transaction from exercising all their rights and obligations under the transaction documents. This document cannot be reproduced except in full, without prior written approval of the Company. Any unauthorized alteration, forgery or falsification of the content or appearance of this document is unlawful and offenders may be prosecuted to the fullest extent of the law. Unless otherwise stated the results shown in this test report refer only to the sample(s) tested.

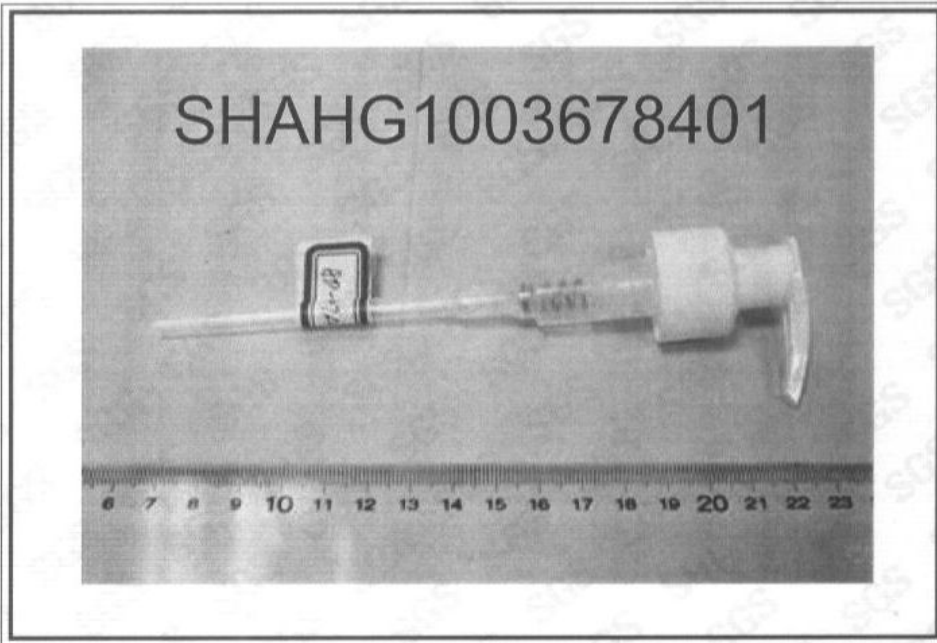
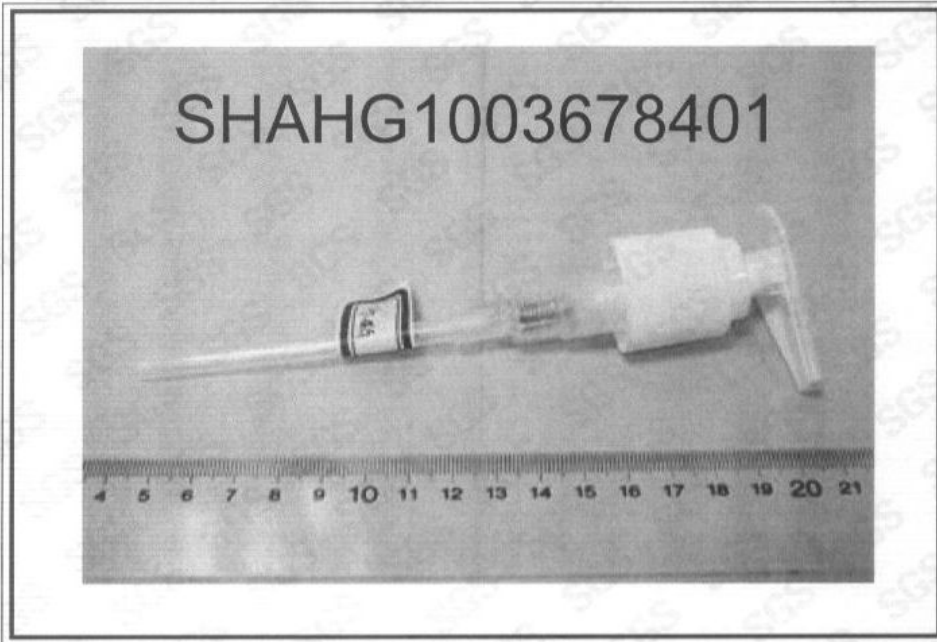


Attention: To check the authenticity of testing / inspection report & certificate, pls. contact tel: (86-755)83071443 email: CN.Doccheck@sgs.com



This document is issued by the Company subject to its General Conditions of Service printed overleaf, available on request or accessible at http://www.sgs.com/terms_and_conditions.htm and for electronic format documents, subject to Terms and Conditions for Electronic Documents at www.sgs.com/terms_e-document.htm. Attention is drawn to the limitation of liability, jurisdiction and jurisdiction issues defined therein. Any holder of this document is advised that information contained hereon reflects the Company's findings at the time of its inspection only and within the limits of Client's instructions, if any. The Company's sole responsibility is to its Client and this document does not exonerate parties to a transaction from exercising all their rights and obligations under the transaction documents. This document cannot be reproduced except in full, without prior written approval of the Company. Any unauthorized alteration, forgery or falsification of the content or appearance of this document is unlawful and offenders may be prosecuted to the fullest extent of the law. Unless otherwise stated, the results shown in this test report refer only to the sample(s) tested.

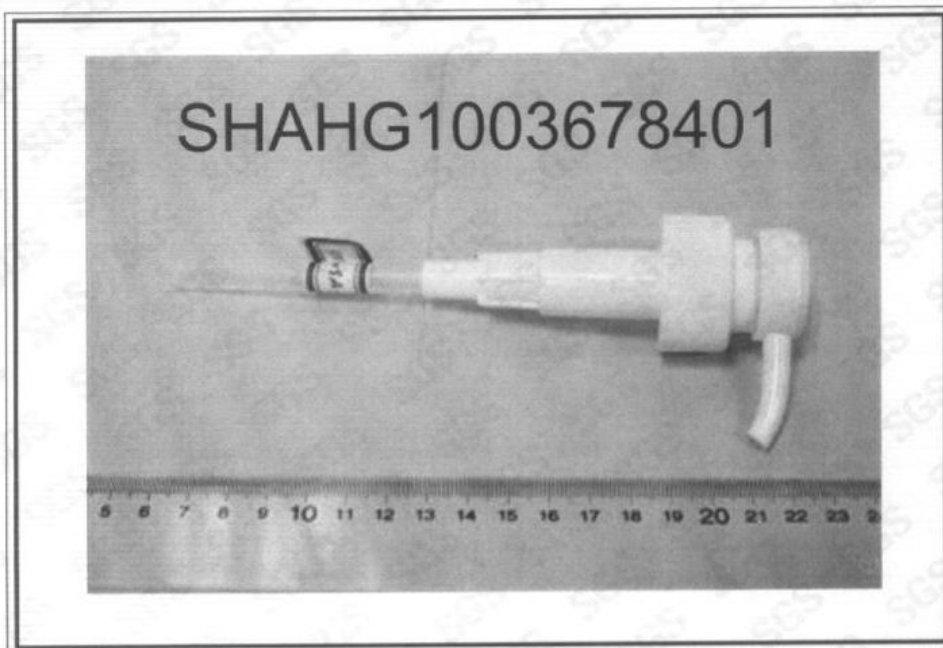




Attention: To check the authenticity of testing /inspection report & certificate, pls. contact tel: (86-755)83071443 email: CN.Doccheck@sgs.com

This document is issued by the Company subject to its General Conditions of Service printed overleaf, available on request or accessible at http://www.sgs.com/terms_and_conditions.htm and for electronic format documents, subject to Terms and Conditions for Electronic Documents at www.sgs.com/terms_e-document.htm. Attention is drawn to the limitation of liability, indemnification and jurisdiction issues defined therein. Any holder of this document is advised that information contained hereon reflects the Company's findings at the time of its inspection only and within the limits of Client's instructions, if any. The Company's sole responsibility is to its Client and this document does not exonerate parties to a transaction from exercising all their rights and obligations under the transaction documents. This document cannot be reproduced except in full, without prior written approval of the Company. Any unauthorized alteration, forgery or falsification of the content or appearance of this document is unlawful and offenders may be prosecuted to the fullest extent of the law. Unless otherwise stated the results shown in this test report refer only to the sample(s) tested.





SGS authenticate the photo on original report only

*** End of Report ***

Attention: To check the authenticity of testing /inspection report & certificate, pls. contact tel: (86-755)83074443 email: CN.Doccheck@sgs.com

This document is issued by the Company subject to its General Conditions of Service printed overleaf, available on request or accessible at http://www.sgs.com/terms_and_conditions.htm and for electronic format documents, subject to Terms and Conditions for Electronic Documents at www.sgs.com/terms_e-document.htm. Attention is drawn to the limitation of liability, jurisdiction and jurisdiction issues defined therein. Any holder of this document is advised that information contained hereon reflects the Company's findings at the time of its intervention only and within the limits of Client's instructions, if any. The Company's sole responsibility is to its Client and this document does not exonerate parties to a transaction from exercising all their rights and obligations under the transaction documents. This document cannot be reproduced except in full, without prior written approval of the Company. Any unauthorized alteration, forgery or falsification of the content or appearance of this document is unlawful and offenders may be prosecuted to the fullest extent of the law. Unless otherwise stated the results shown in this test report refer only to the sample(s) tested.

